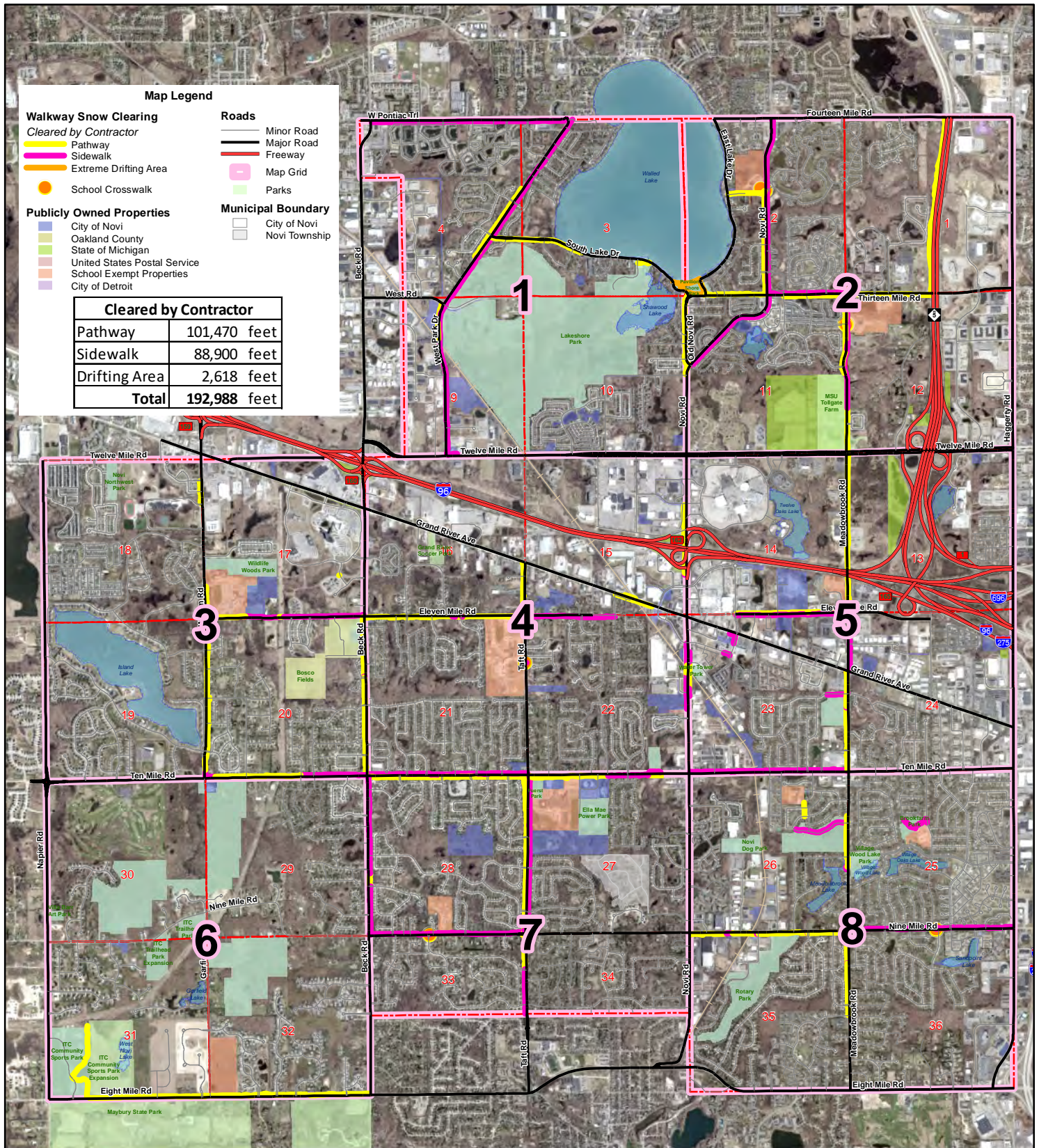


2024-2025 City of Novi Contractor Sidewalk Snow Clearing Map Book



MAP INTERPRETATION NOTICE

Map information depicted is not intended to replace or substitute for any official or primary source. This map was intended to meet National Map Accuracy Standards and use the most recent, accurate sources available to the people of the City of Novi. Boundary measurements and area calculations are approximate and should not be construed as survey measurements performed by a licensed Michigan Surveyor as defined in Michigan Public Act 132 of 1970 as amended. Please contact the City GIS Manager to confirm source and accuracy information related to this map.



Miles

0 0.375 0.75 1.5

1 inch = 4,424 feet

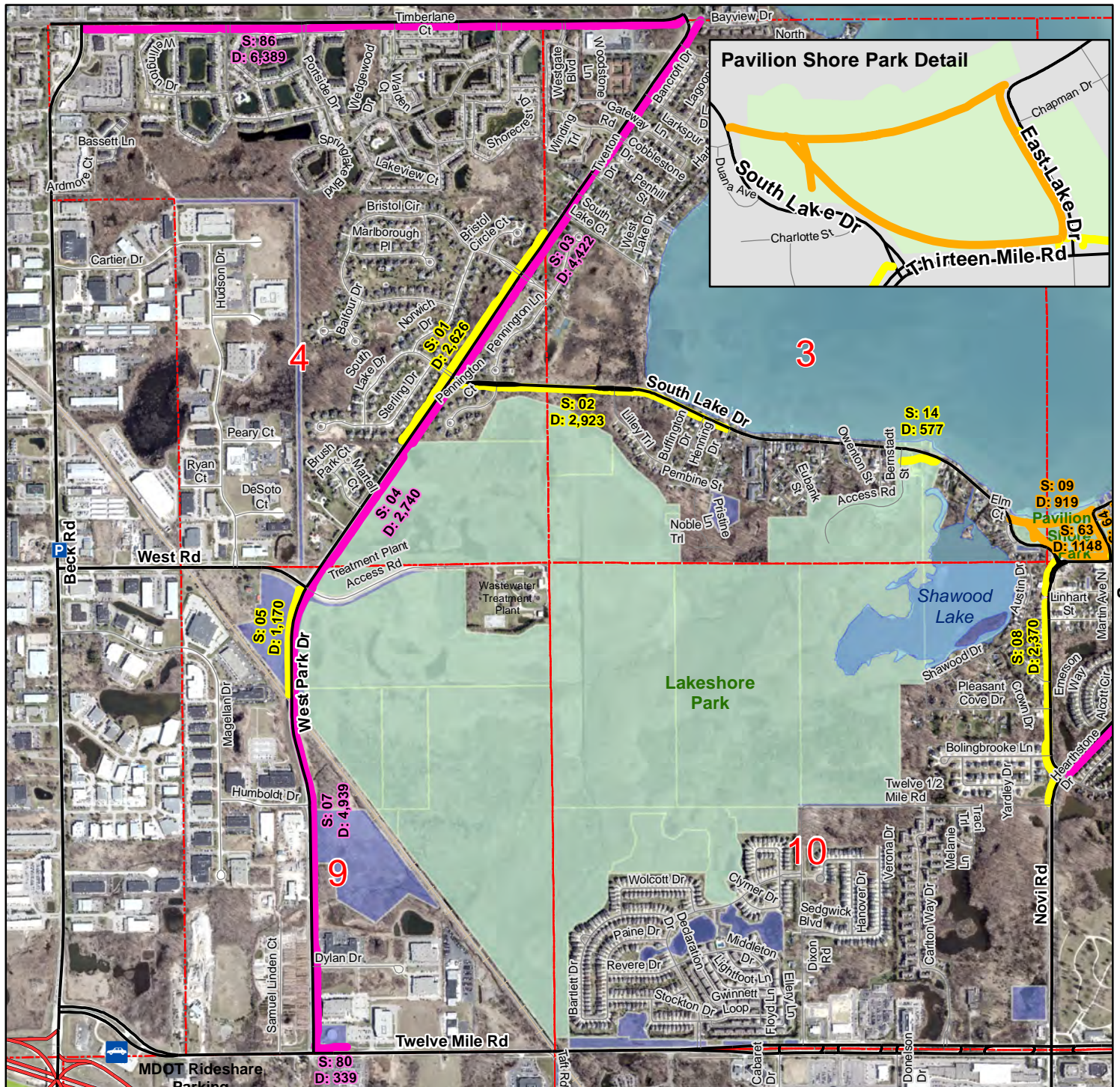
Map Author: Keri Blough
 Date: September 23, 2024
 Project: Winter Sidewalk
 Snow Clearing
 Version: 1.0



City of Novi

Integrated Solutions Team
 Geospatial Resources Division
 45175 Ten Mile Rd
 Novi, MI 48375
 cityofnovi.org

2024-2025 City of Novi Contractor Sidewalk Snow Clearing Map Detail 1



See Page 4

Map Author: Jon Gartha
Date: September 30, 2024
Project: Winter Sidewalk Snow Clearing
Version: 1.0

MAP INTERPRETATION NOTICE

Map information depicted is not intended to replace or substitute for any official or primary source. This map was intended to meet National Map Accuracy Standards and use the most recent, accurate sources available to the people of the City of Novi. Boundary measurements and area calculations are approximate and should not be construed as survey measurements performed by a licensed Michigan Surveyor as defined in Michigan Public Act 132 of 1970 as amended. Please contact the City GIS Manager to confirm source and accuracy information related to this map.

Map Legend

Walkway Snow Clearing Cleared by Contractor

- Pathway
- Sidewalk
- Extreme Drifting Area
- School Crosswalk

Roads

- Minor Road
- Major Road
- Freeway

Publicly Owned Properties

- City of Novi
- Oakland County
- State of Michigan
- United States Postal Service
- School Exempt Properties
- City of Detroit

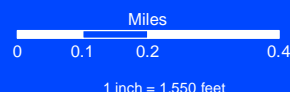
Municipal Boundary

- City of Novi
- Novi Township



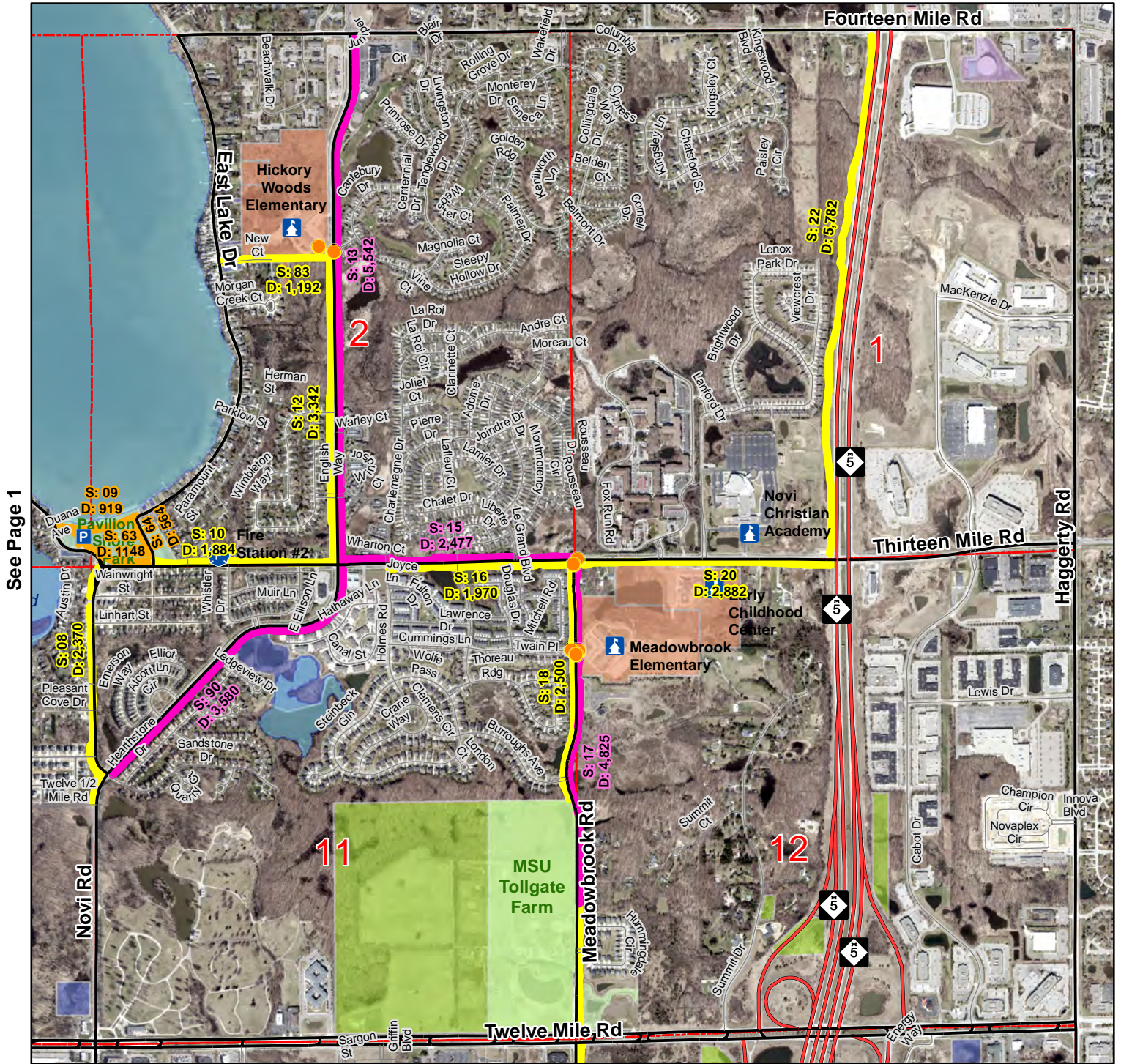
City of Novi

Integrated Solutions Team
Geospatial Resources Division
45175 Ten Mile Rd
Novi, MI 48375
cityofnovi.org



See Page 2

2024-2025 City of Novi Contractor Sidewalk Snow Clearing Map Detail 2



See Page 1

See Page 4

Map Author: Jon Gartha
Date: September 30, 2024
Project: Winter Sidewalk Snow Clearing
Version: 1.0

MAP INTERPRETATION NOTICE

Map information depicted is not intended to replace or substitute for any official or primary source. This map was intended to meet National Map Accuracy Standards and use the most recent, accurate sources available to the people of the City of Novi. Boundary measurements and area calculations are approximate and should not be construed as survey measurements performed by a licensed Michigan Surveyor as defined in Michigan Public Act 132 of 1970 as amended. Please contact the City GIS Manager to confirm source and accuracy information related to this map.

Map Legend

Walkway Snow Clearing Cleared by Contractor

- Pathway
- Sidewalk
- Extreme Drifting Area
- School Crosswalk

Roads

- Minor Road
- Major Road
- Freeway

Publicly Owned Properties

- City of Novi
- Oakland County
- State of Michigan
- United States Postal Service
- School Exempt Properties
- City of Detroit

Municipal Boundary

- City of Novi
- Novi Township

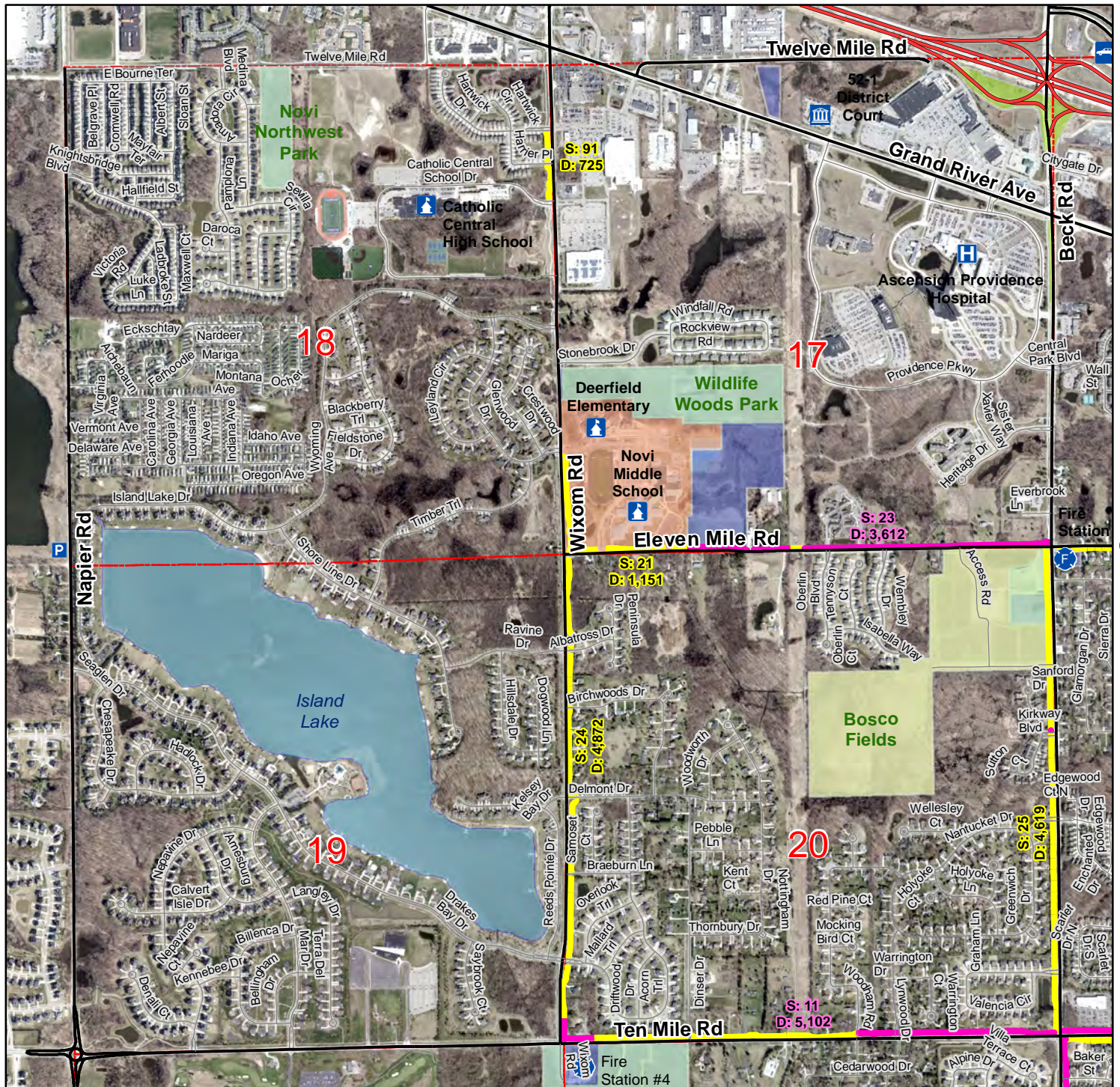


City of Novi

Integrated Solutions Team
Geospatial Resources Division
45175 Ten Mile Rd
Novi, MI 48375
cityofnovi.org



2024-2025 City of Novi Contractor Sidewalk Snow Clearing Map Detail 3



See Page 4

See Page 6

Map Author: Jon Gartha
Date: September 30, 2024
Project: Winter Sidewalk Snow Clearing
Version: 1.0

MAP INTERPRETATION NOTICE

Map information depicted is not intended to replace or substitute for any official or primary source. This map was intended to meet National Map Accuracy Standards and use the most recent, accurate sources available to the people of the City of Novi. Boundary measurements and area calculations are approximate and should not be construed as survey measurements performed by a licensed Michigan Surveyor as defined in Michigan Public Act 132 of 1970 as amended. Please contact the City GIS Manager to confirm source and accuracy information related to this map.

Map Legend

Walkway Snow Clearing

Cleared by Contractor

- Pathway
- Sidewalk
- School Crosswalk

Roads


- Minor Road
- Major Road
- Freeway

Publicly Owned Properties

- City of Novi
- Oakland County
- State of Michigan
- United States Postal Service
- School Exempt Properties
- City of Detroit

Municipal Boundary

- City of Novi
- Novi Township




City of Novi

Integrated Solutions Team
Geospatial Resources Division
45175 Ten Mile Rd
Novi, MI 48375
cityofnovi.org

Scale

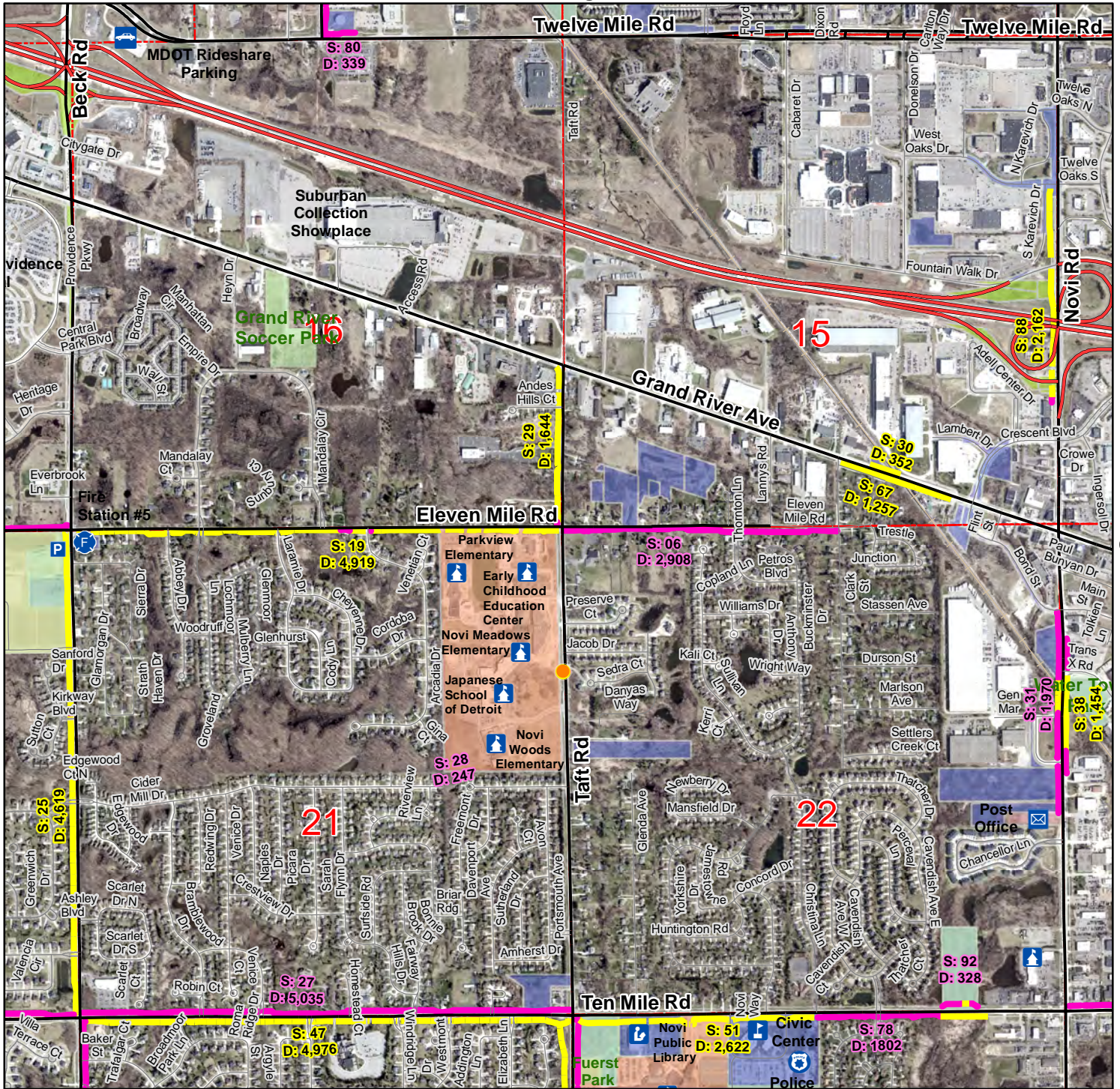
0 0.1 0.2 0.4 Miles

1 inch = 1,550 feet



2024-2025 City of Novi Contractor Sidewalk Snow Clearing Map Detail 4

See Page 1



See Page 3

See Page 5

See Page 7

Map Author: Jon Gartha
Date: September 30, 2024
Project: Winter Sidewalk Snow Clearing
Version: 1.0

MAP INTERPRETATION NOTICE

Map information depicted is not intended to replace or substitute for any official or primary source. This map was intended to meet National Map Accuracy Standards and use the most recent, accurate sources available to the people of the City of Novi. Boundary measurements and area calculations are approximate and should not be construed as survey measurements performed by a licensed Michigan Surveyor as defined in Michigan Public Act 132 of 1970 as amended. Please contact the City GIS Manager to confirm source and accuracy information related to this map.

Map Legend

Walkway Snow Clearing

Cleared by Contractor

- Pathway
- Sidewalk
- School Crosswalk

Roads


- Minor Road
- Major Road
- Freeway

Publicly Owned Properties

- City of Novi
- Oakland County
- State of Michigan
- United States Postal Service
- School Exempt Properties
- City of Detroit

Municipal Boundary


- City of Novi
- Novi Township



City of Novi

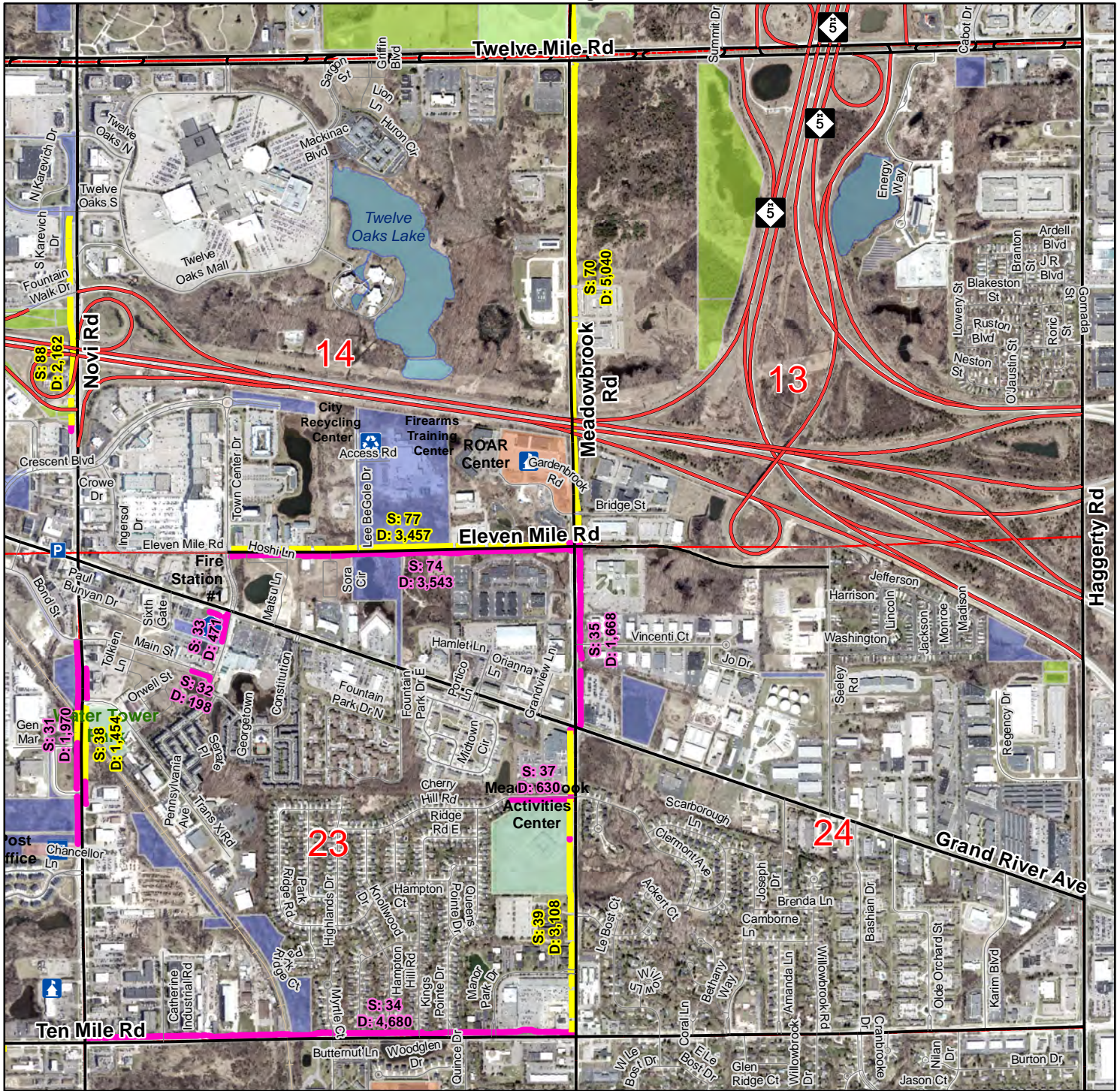
Integrated Solutions Team
Geospatial Resources Division
45175 Ten Mile Rd
Novi, MI 48375
cityofnovi.org

Miles
0 0.1 0.2 0.4
1 inch = 1,556 feet

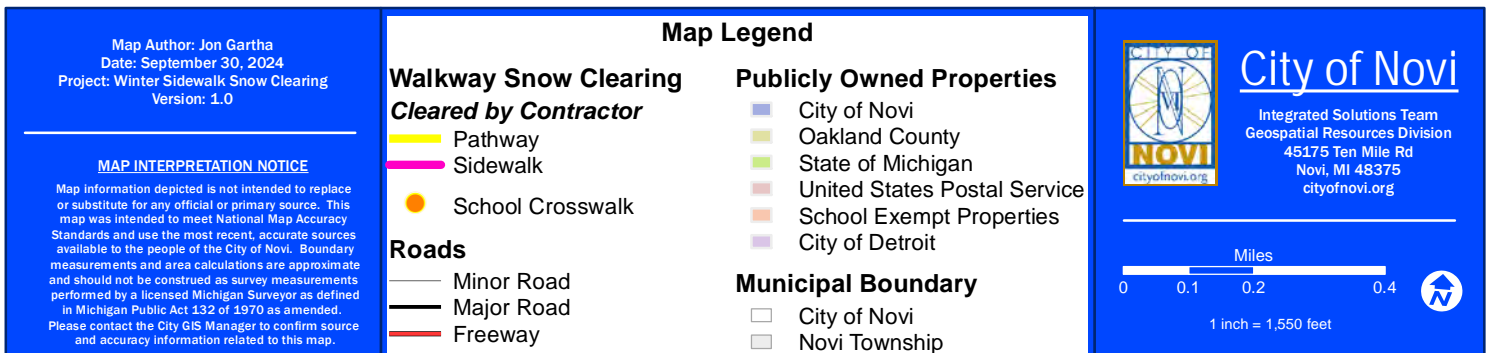


2024-2025 City of Novi Contractor Sidewalk Snow Clearing Map Detail 5

See Page 2

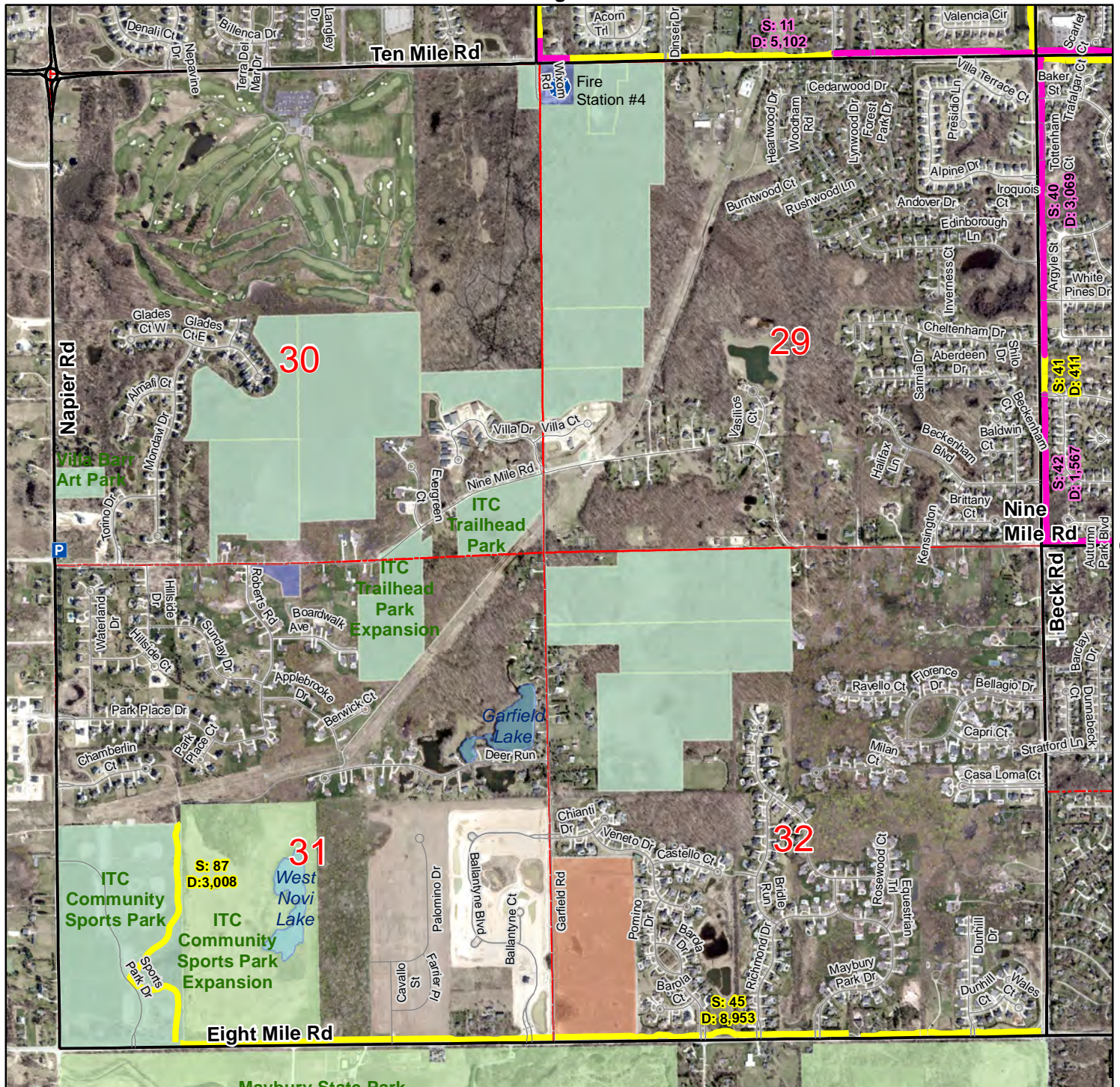


See Page 8



2024-2025 City of Novi Contractor Sidewalk Snow Clearing Map Detail 6

See Page 3



See Page 7

Map Author: Jon Gartha
Date: September 30, 2024
Project: Winter Sidewalk Snow Clearing
Version: 1.0

MAP INTERPRETATION NOTICE

Map information depicted is not intended to replace or substitute for any official or primary source. This map was intended to meet National Map Accuracy Standards and use the most recent, accurate sources available to the people of the City of Novi. Boundary measurements and area calculations are approximate and should not be construed as survey measurements performed by a licensed Michigan Surveyor as defined in Michigan Public Act 132 of 1970 as amended. Please contact the City GIS Manager to confirm source and accuracy information related to this map.

Walkway Snow Clearing Cleared by Contractor

- Pathway
- Sidewalk
- Extreme Drifting Area
- School Crosswalk

Roads

- Minor Road
- Major Road
- Freeway

Publicly Owned Properties

- City of Novi
- Oakland County
- State of Michigan
- United States Postal Service
- School Exempt Properties
- City of Detroit

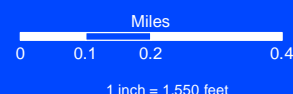
Municipal Boundary

- City of Novi
- Novi Township



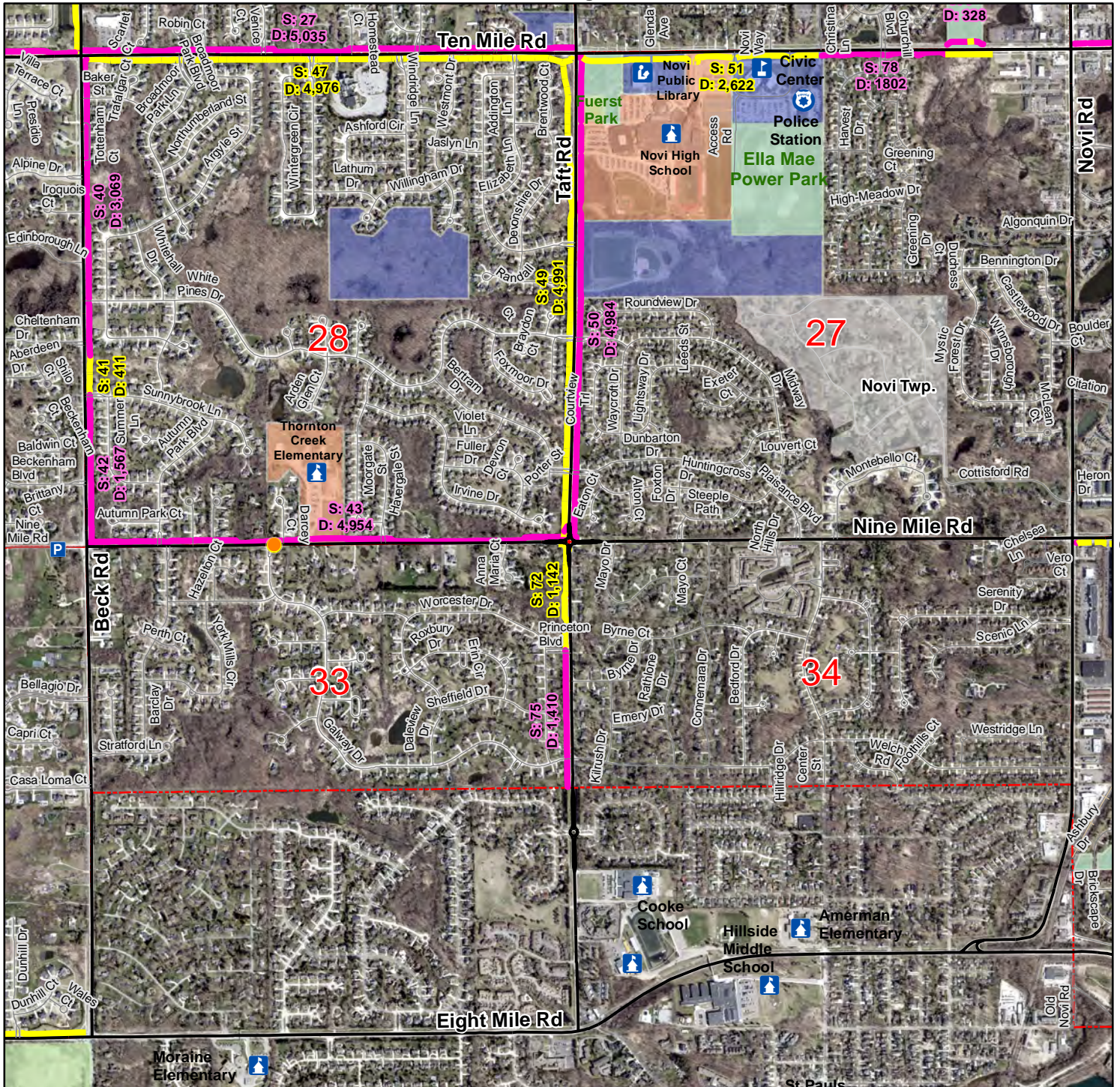
City of Novi

Integrated Solutions Team
Geospatial Resources Division
45175 Ten Mile Rd
Novi, MI 48375
cityofnovi.org



2024-2025 City of Novi Contractor Sidewalk Snow Clearing Map Detail 7

See Page 4



See Page 6

See Page 8

Map Author: Jon Gartha
Date: September 30, 2024
Project: Winter Sidewalk Snow Clearing
Version: 1.0

MAP INTERPRETATION NOTICE

Map information depicted is not intended to replace or substitute for any official or primary source. This map was intended to meet National Map Accuracy Standards and use the most recent, accurate sources available to the people of the City of Novi. Boundary measurements and area calculations are approximate and should not be construed as survey measurements performed by a licensed Michigan Surveyor as defined in Michigan Public Act 132 of 1970 as amended. Please contact the City GIS Manager to confirm source and accuracy information related to this map.

Map Legend

Walkway Snow Clearing

Cleared by Contractor

- Pathway
- Sidewalk
- School Crosswalk

Roads

- Minor Road
- Major Road
- Freeway

Publicly Owned Properties

- City of Novi
- Oakland County
- State of Michigan
- United States Postal Service
- School Exempt Properties
- City of Detroit

Municipal Boundary

- City of Novi
- Novi Township



City of Novi

Integrated Solutions Team
Geospatial Resources Division
45175 Ten Mile Rd
Novi, MI 48375
cityofnovi.org

Miles

0 0.1 0.2 0.4

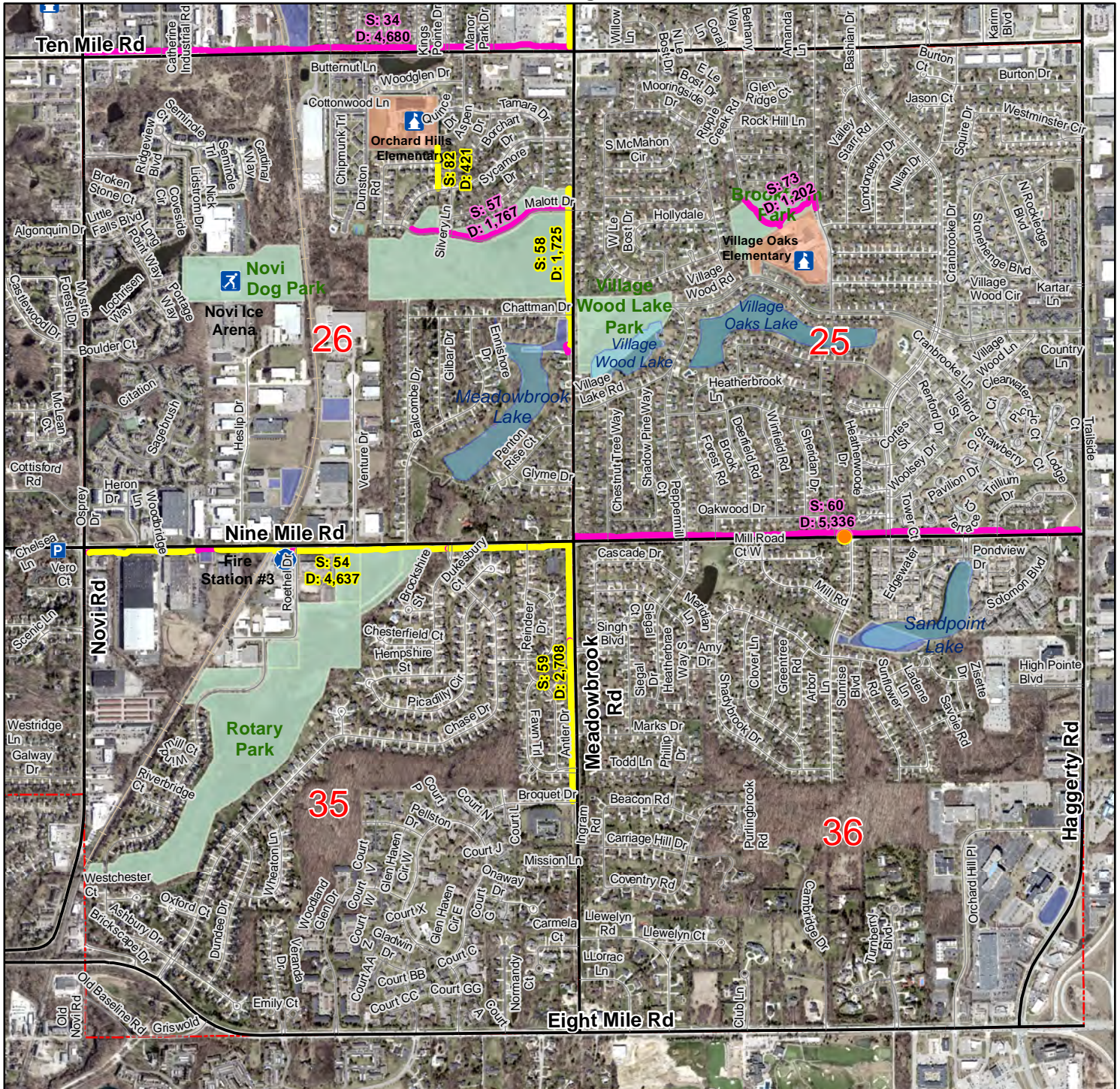
1 inch = 1,550 feet



2024-2025 City of Novi Contractor Sidewalk Snow Clearing Map Detail 8

See Page 5

See Page 7



Map Author: Jon Gartha

Date: September 30, 2024

Project: Winter Sidewalk Snow Clearing
Version: 1.0

MAP INTERPRETATION NOTICE

Map information depicted is not intended to replace or substitute for any official or primary source. This map was intended to meet National Map Accuracy Standards and use the most recent, accurate sources available to the people of the City of Novi. Boundary measurements and area calculations are approximate and should not be construed as survey measurements performed by a licensed Michigan Surveyor as defined in Michigan Public Act 132 of 1970 as amended. Please contact the City GIS Manager to confirm source and accuracy information related to this map.

Map Legend

Walkway Snow Clearing Cleared by Contractor

- Pathway
- Sidewalk
- Extreme Drifting Area
- School Crosswalk

Roads

- Minor Road
- Major Road
- Freeway

Publicly Owned Properties

- City of Novi
- Oakland County
- State of Michigan
- United States Postal Service
- School Exempt Properties
- City of Detroit

Municipal Boundary

- City of Novi
- Novi Township



City of Novi

Integrated Solutions Team
Geospatial Resources Division
45175 Ten Mile Rd
Novi, MI 48375
cityofnovi.org

